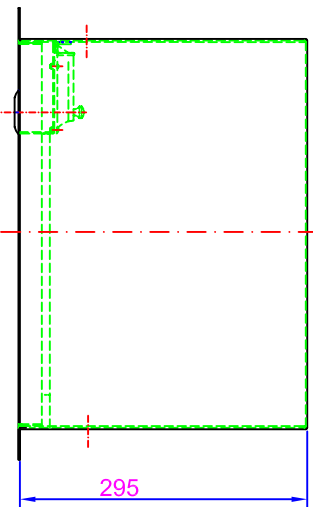


- Technical Requirements:
1. Cabinet shell and door is connected with hinges and the door and hinges are connected through using d3.2 blind rivets(per picture shown);
  2. When the cabinet is locked in close, the door shall be flush with cabinet; and the door opening angle shall be more than 180°;
  3. When there is no key to open and in urgent use, just break the wire glass and directly open the latch lock by hand from inside.



10	DLX01-035-03-Y01	Marking	1						
9	GB/T818-2000	M4×16 Pan head screw	3	Steel					Galvanized
8	DLX02-037	Latch lock	1	Assembly					
7	DLX01-035-03	Wire glass	1	Glass 540×265×6mm					
6	GB/T6182-2000	M5 Hexagon locking nut	6	Copper					Nickel plating
5	DLX02-039A	Press plate	1	SUS304					
4	DLX01-035B-02	Door	1	SUS304					
3	GB12618-90	Blind rivet d 3.2	8	Aluminum					
2	DLX02-023	Hinge	1	SUS304					
1	DLX01-035B-01	Cabinet shell	1	SUS304					
No.	Drawing No.	Name	Q'ty	Material	Weight	Remark			
			595×395×295	Stainless Steel Fire Cabinet	HC003				
			Assembly						
Zone	Revision note	Date	Signature	W.T. 14Kg		Scale			
Drawn			Audit						
Checked			Approved						